

KELLOGG

MASTERPHONE CATALOG, 1000 SERIES, 1948

Complete catalog of the 1000 series (Redbar) line of telephones including CB, manual and magneto. Complete parts list for this line and current drawings with maintenance information. Produced by lithography in three colors, 8 X 10 ½ inches, saddle stitched, on 60# coated stock. The piece is not dated nor does it contain a form number, the date is assumed from the content of the piece and a consciences of several ex-Kellogg employees. Scanned from an original document furnished by Steve Cichorsky

Also in this PDF are a 4 page 1000 series sales brochure, cover letter with an order sheet , an 8 page Master-Dial brochure that covers completely the dial that will later be known as the number 10 and other material. The letter is dated January 6, 1948 and is signed by E. W. Miller, Manager of the apparatus sales department. Scanned from the original documents, taken from the collection of Mike Neale.

Scanning and Adobe Document Produced by Mike Neale, Member of
Antique Telephone Collectors Association US
Telephone Collectors International US
Telecom Heritage Group UK

www.kelloggtelephone.com

Adobe Document Copyright 2006, Mike Neale, Midland, Texas, USA



www.atcaonline.com



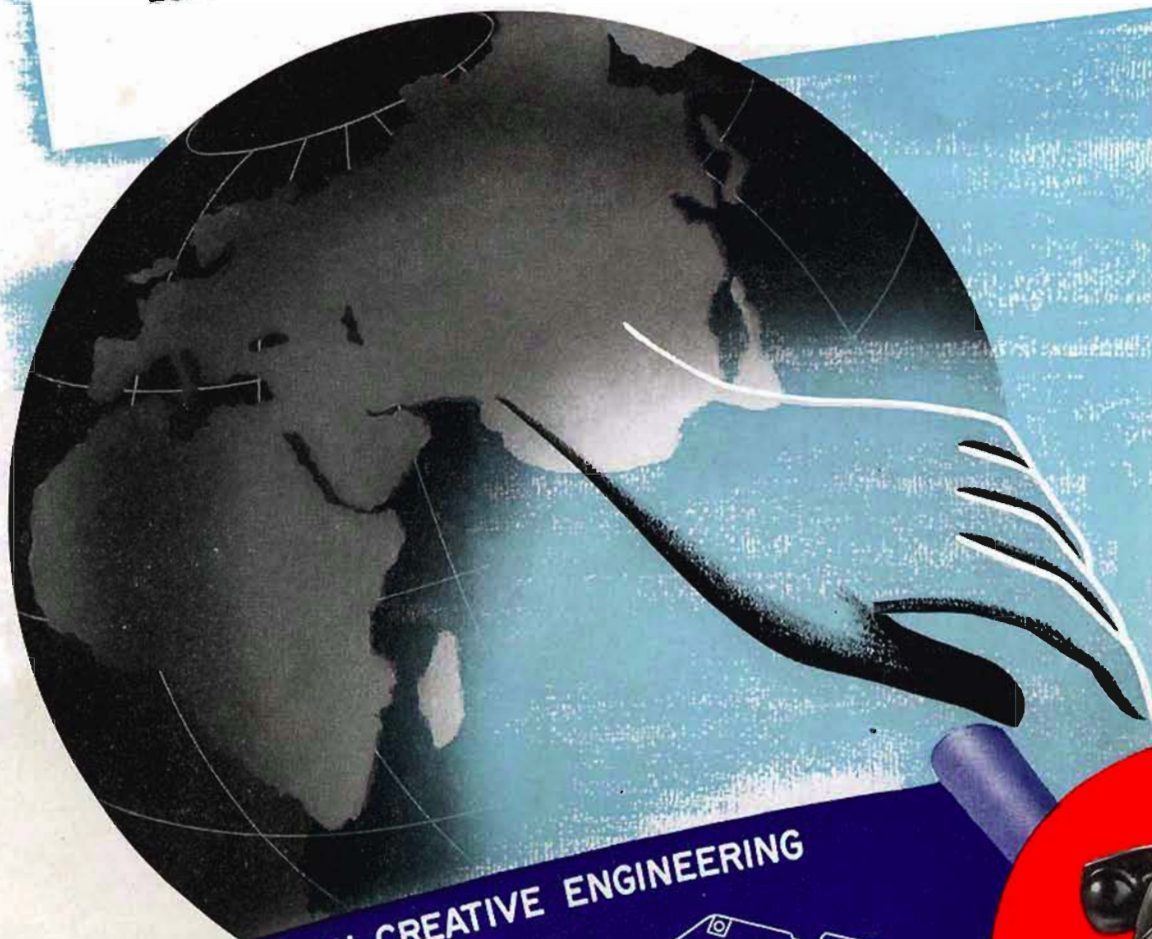
www.telephonecollectors.org



www.thg.org.uk

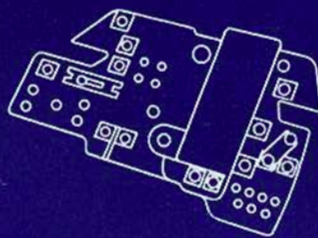
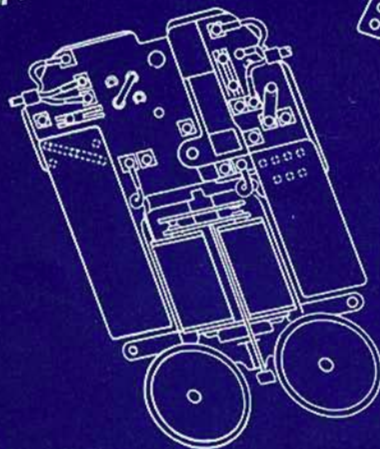
KELLOGG MASTERPHONE CATALOG

1000 SERIES



FIRST AGAIN IN CREATIVE ENGINEERING

EVERY PART A NEW DESIGN



KELLOGG SWITCHBOARD AND SUPPLY COMPANY

KELLOGG MASTERPHONES

CUSTOMER INFORMATION

PRICES: Prices herein are subject to change without notice and do not include excise, sales, use or similar taxes or duties. Where applicable such taxes or duties will be shown as additional charges on the invoices. All orders will be invoiced at lowest prevailing prices at time of shipment. Priced orders, which because of change cannot be filled at prices specified will be invoiced at the lowest prevailing prices.

GUARANTEE: Through the years Kellogg has established with its customers, the reputation of selling goods that give a full measure of satisfaction. Further, all goods properly used are fully guaranteed for one year against any defect in material or workmanship and are subject to replacement. Always notify us before making any return shipments. This will help to make the proper adjustment without delay.

TERMS: Terms are 30 days net from date of invoice unless otherwise indicated on invoices. Charge accounts are invited. New Customers who may not be rated by the commercial agencies can help assure prompt service by sending credit information with initial orders. Sight draft or C.O.D. orders receive the same immediate attention as those covered by established charge accounts.

ORDERS: To avoid errors or delays, catalog numbers as well as the name of each article should appear on the order. Possibilities of delay are decreased when complete information is given in the order. Telephone or telegraph orders should be confirmed by mail immediately so that if a mistake is made in transmission of the order it can be checked and corrected. However, confirming orders must be marked "Confirming" to avoid the possibility of duplication.

CHANGES AND CANCELLATIONS: A reasonable charge is made for changes or cancellation of orders when engineering, special assembly or adjustment is involved. These charges are only sufficient to compensate for the actual loss in time or material.

SHIPMENTS: Always specify whether goods are to be shipped via freight, express or parcel post. When shipment is desired by freight please specify the routing. In the absence of instructions we shall use our best judgment in selecting routes which will assure the best service. Deliveries of items listed in this price list are contingent on our ability to obtain the necessary raw materials.

CLAIMS FOR SHORTAGE, BREAKAGE OR NON-DELIVERY: All claims for breakage, damages and non-delivery should be made without delay to the transportation company handling the shipment. We will gladly assist in presenting these claims. Receipts from the transportation company specify that shipments are received in good condition, therefore shipments must be checked as they are received. Always have the agent of the transportation company make a notation on the bill of lading specifying any damage or shortage. If packages or cases are in apparent good order, but contents are found to be damaged upon opening, call the freight agent or adjuster and have him mark the freight bill to show the concealed damage. Claims for damage or non-delivery of parcel post shipments should be made to us as we insure this material and make all adjustments.

RETURNING GOODS: Please notify us before making any return shipments. This will help to make the proper adjustment without delay. The liability of the Kellogg Company is limited in all cases to the value of the goods claimed to be defective.

MARINE AND PARCEL POST INSURANCE: Unless otherwise directed, we shall insure against non-delivery all shipments made by steamer or parcel post. A nominal charge will be made to cover the cost of this service.

SPECIFICATIONS: Statistical information contained in this catalog pertaining to strength and proper working loads of materials, tools, etc., is derived from tables compiled by the manufacturer and is reprinted for the convenience of the buyer.

KELLOGG MASTERPHONES 1000 SERIES

FOR over half a century Kellogg telephones have played a leading part in the advancement of telephony through a medium of never ending research, creative engineering and practical design. In recognizing operating companies' need for progressively better telephones, Kellogg produced the 1000 Series Masterphone . . . a symbol of leadership in the telephone field. This remarkable telephone has been designed to provide efficient, low cost service today . . . tomorrow . . . and for many years to come. Review the features and see why these telephones are truly the ultimate in modern telephonic transmission and reception.

SIMPLICITY Good creative engineering has compounded the intricate details of telephone design into a Masterphone free of complicated circuit wiring. The only tool required for the installation and servicing of the 1000 Series Masterphones is a screw driver—no soldering equipment to mess with.

ADAPTABILITY The Kellogg 1000 Series Masterphones are adapted to all classes of subscribers' services—common battery or magneto; dial or manual desk or wall; biased, harmonic or straight line ringing. The Masterphone is adapted also, as a two piece instrument, for existing three and four conductor common battery and magneto desk set boxes.

RELIABILITY Telephone hazards including insects, dust, extreme humidity and temperature conditions, transmission and reception difficulties, and excessive side tone have been reduced almost to a point of extinction through the incorporation of new and modified telephone components. Maintenance has therefore been minimized. The Interconnecting Block which obviates complicated and loose wiring is probably the most important innovation in presenting the Masterphone as a peak performer. The possibility of an internal short is practically nil.

ECONOMY The 1000 Series Masterphones are precision made from the finest raw materials, to provide an instrument that is rugged in its construction—dependable and trouble-free in its operation. Low cost installation, operation and maintenance is the Masterphone's keynote to real economy.



KELLOGG MASTERPHONES

CLASSES AND RANGE OF SERVICES

Kellogg's patented Interconnecting Block gives the 1000 Series Masterphone complete versatility. No other telephone on the market will provide a broader range of installation variations. A stamped, all-metal, grill type, anti-side tone Triad Circuit, nested in the bakelite block, universally adapts itself to all common battery or magneto classes of telephone service . . . for both desk and wall instruments.

Biased, Harmonic, or Straight Line Ringers for all types of ringing have been designed to produce the finest ringing qualities—maximum sensitivity, ear-pleasing sound.

To make the 1000 Series Masterphones totally inclusive of all subscribers' services, this instrument is also available for existing three and four conductor common battery and magneto desk set boxes.

FOUR STEPS TO ADJUST

Adjusting the instrument for a particular installation is done by (1) removing the telephone housing from the base plate; (2) adapting the universal circuit to metallic or grounded ringing; (3) zoning the common battery induction coil to provide the best possible compromise between side tone reduction, and transmission and reception; (4) changing the microfarad capacity of the condenser to 0.5 or 1.0 mfd. as required for the particular ringing application. No soldering or unsoldering is necessary.

Ringer leads, handset and line cord conductors are terminated to stencilled screw terminals on the Interconnecting Block. All other terminals and circuit changing links likewise are clearly stencilled. A screw driver is the only tool needed for the installation or for the repair of the 1000 Series Masterphone.

THREE STEPS TO CONVERT

The base plate upon which all components are mounted is used with both desk and wall models. The Masterphone may therefore be converted from a wall model to a desk model or from a desk to a wall. The conversion from desk to wall may be effected by (1) removing the rubber feet from the base plate; (2) attaching it to the wall; (3) replacing the desk housing with the wall housing. That's all.

INSTALLATION EASE

Installing the new Masterphone is easy . . . in *all* applications. A medium size screw driver alone does the job.

DESIGN, FUNCTION AND OPERATION OF COMPONENTS



Desk and Wall Housings—The Masterphone housings are one-piece, high impact bakelite moldings having sufficient wall thickness to withstand all ordinary usage. Smooth contours and lines blended together with lustrous uniform black finish make them modern in simplicity.

The surface of the housings will not chip, peel or blister. A horizontal bar is provided on the back side of the desk housing for convenience and easy handling. Sound openings in the wall housing are screened for protection against insects and dust particles. The desk housing is attached to the base plate by a catch and a single screw. The wall housing is attached to the base plate by means of a catch and a spring latch.



Handset—The handset handle has been redesigned to offset any possibility of transmitter and receiver bowl contact, in case of droppage, through the incorporation of a longitudinal rib molded into the top of the handle. Proper spacing and inclination of the bowls contribute the most natural transmission and receiving positions.

The handset cord is 48" in overall length; 45½" from the instrument to the handset. Individual conductors are rubber insulated; color coded red, white, black. Braided, black mercerized cotton, treated against moisture and fungus envelopes the conductors. Cord terminals are a solderless spade tip type.

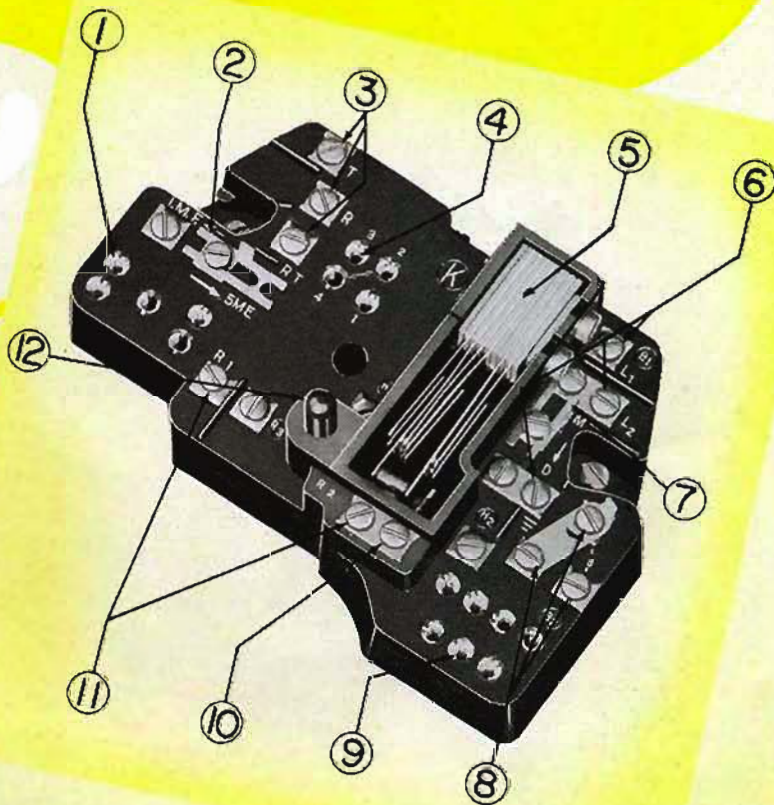


Plunger Bar—The plunger bar is a one-piece molded thermoplastic compound, its distinctive rich red color breaking contour lines and furnishing style and dignity to the Masterphone. The plunger bar is mounted on a brass support bracket and actuates through friction reduction rollers.

T KELLOGG MASTERPHONES THE INTERCONNECTING BLOCK

The "Heart and Nerve Center"—Here is the most important innovation of the Kellogg 1000 Series Masterphones. The Interconnecting Block, new, patented, is far ahead in creative telephonic engineering.

The Interconnecting Block is simply a molded one-piece black bakelite block underneath which is nested a stamped, grid or grill type universal anti-side tone Triad Circuit. Upon it all electrical components are conveniently mounted. Moreover, the Interconnecting Block does away completely with all soldered, loose, and complicated component circuit wiring.



1. Socket for plug-in type bakelite encased universal condenser; furnishes capacities for all applications.



Now Look Underneath—Here may be seen the permanently wired Triad Circuit. No change need ever be made in the physical circuit itself. All connections terminate at the top side of the block in the form of either screw connectors or pin jacks.

2. Condenser 2-way switching unit. Slide the link to one position for 1.0 mfd. capacity, the other for 0.5 mfd. capacity.

3. Connection for the handset cord. Convenient screw type terminals.

4. Dial cord plugs in here—just like a tube into a radio—no connections to loosen or unsolder.

5. Switching springs are built right into the Interconnecting Block. Spring leaves are nickel silver, having twin platinum point and disc contacts. Cover (not shown) assures protection against dust, insects, moisture.

6. Line conductor leads attach here. Each connection is identified for rapid, easy installation.

7. Simple, 2-way switching unit simplifies adaptation of circuit to metallic or grounded ringing. Simply sliding the link to the desired position does it.

8. With this 3-way switching unit the slide link is simply placed in the desired position to zone the induction coil for long, medium or short loops.

9. Here's where the bakelite-encased Induction Coil plugs in. Single coil, with switch provides control over transmission, reception, and side tone for the various loops.

10. Ringer terminal, which also accommodates a bracket to mount and connect either the Vincent Rare Gas Relay or the Western Electric No. 333A Vacuum Tube.

11. Ringer leads normally connect here. Other terminals provided for special applications.

12. Plunger which operates switching springs. Direct mechanical connection is visible on underside of the Interconnecting Block.

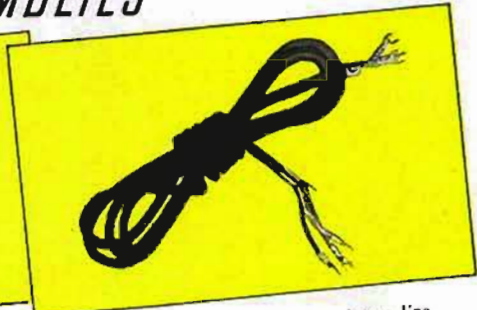
KELLOGG MASTERPHONES COMPONENT ASSEMBLIES



Line Connecting Block—The line connecting block is molded black base, fitted with terminals for the anchoring of two, three or four conductors as provided in the base cord. Equipped with a black, molded cover modern and symmetrical in design.



Base Plate—The rectangular shaped base plate is 3 x 7 inches, drawn from heavy brass, finished in black. Modern chemical treatment affords scratch protection while cutting down corrosion vulnerability. Sound openings are screened against dust and insects.



Line Cord—A three or four conductor line cord is furnished with all desk telephones. The rubber insulated conductors are color coded red, white and black. Overall length of the cord is 71 3/4 inches. To each end is attached stay-hooks for anchoring to the Interconnecting Block and to the line connecting block.



Condenser—A single condenser encased in a molded bakelite housing is standard for all types of subscribers' services. Electrical terminations are pin plug type; condenser plugs into the pin jacks located on the Interconnecting Block. The capacity control switch (see item 2, page 5) varies condenser capacities to 0.5 or 1.0 microfarad as required for the various ringing applications.



Receiver—The receiver is a new, compact, self-contained capsule type unit equipped with bronze contact clips which eliminate cord terminals and screw connections. Obnoxious peaks or dips in the voice frequency range are expelled. The receiver is a quency range type sustaining improved controlled response type sustaining improved high fidelity reproduction and articulation of voice frequencies.



Transmitter—The transmitter is a capsule type of feltless construction redesigned for improved acoustic control. A shield-protected one-piece phosphorus bronze diaphragm and gold electrodes make this new transmitter most reliable under adverse humidity and temperature conditions. It has greater electrical output, good non-positional qualities, and excellent response throughout a wide range of applied voltages.



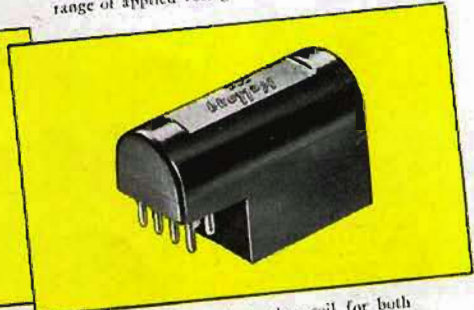
Retard Coil—In such instances where it is advantageous to adapt the new desk and wall telephones to local battery talking and common battery signalling, a retard coil will be furnished. The retard or holding coil is the means for holding common battery central office equipment without introducing any appreciable loss in transmission or reception qualities. This system permits high transmission qualities where low battery supply for the transmitter would ordinarily limit the subscribers' loop or the number of bridged telephones.



"Press to Talk" Switch—A "press-to-talk" switch, which may be furnished on both the desk and wall Masterphones, is auxiliary to the normal telephone switching and is mechanically associated with the cradle switch mechanism.

The switch is made available for use on party lines to prevent interference with dialing or ringing impulses should a second party on the line remove the receiver during this interval.

When the "press to talk" switch is used on either common battery or magneto telephone service, a subscriber may "listen in" on the line after placing a reverte call to ascertain when the ringing has stopped and the called party answers.



Induction Coil—The induction coil for both common battery and local battery services is encased in a molded bakelite housing. Electrical terminations are pin plug type; coil plugs into the pin jacks located on the Interconnecting Block.

Common Battery Induction Coil—The new electrical design of the common battery induction coil provides the best ratio between side tone reduction, and transmission and reception for the most commonly used subscribers' loops.

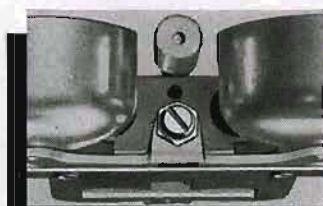
Local Battery Induction Coil—The electrical characteristics of the local battery induction coil are designed for commonly used types of local battery service—its use automatically modifies the universal anti-side tone Triad Circuit to a local battery type circuit.

KELLOGG MASTERPHONES RINGERS

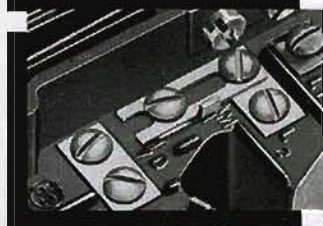


● The various types of biased, harmonic and straight line ringers for the new 1000 Series Masterphones are very similar in overall construction and fundamental design. The electrical characteristics and mechanical movements are synchronized to produce the maximum sensitivity to ringing voltages. The only deviations from the use of interchangeable component parts are those necessary to produce a ringer peculiar to specialized requirements.

The two-tone gongs give a high sound output of pleasing tone quality. Ringing volume, or tone control may be adjusted by a single control screw adjustment which simultaneously modifies the permanent magnetic flux for greater or less sensitivity when required. Generally speaking, the adjustment on the ringers need not be made after factory adjustment. Air gaps, biased spring tension, or gong spacing adjustments may be made when adverse field conditions are met.

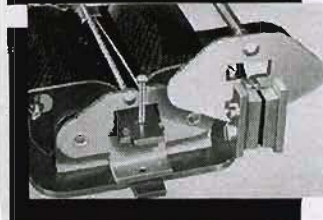


Ringer Adjustment Screw—A single micrometer screw conveniently located between the gongs, makes adjustment for volume and tone control simple and speedy.



Easy Accessibility—two screws mount the ringer; may be removed with a screw driver.

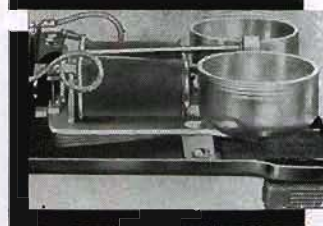
Ringer Circuit Selector—Shifting a slide-link adapts the new Masterphone to either Metallic or Divided Ringing.



Ringer Floats—A new flexible metal mounting "floats" the ringer, improving the tone quality, preventing mechanical distortion, and keeping the ringer in adjustment.

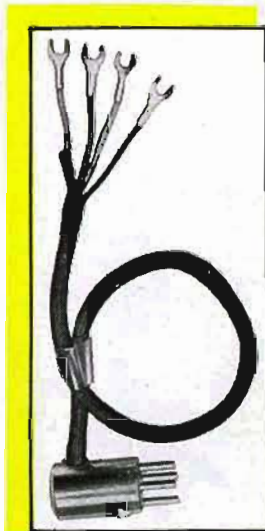
Armature Assemblies are so constructed that they will fit any one of the new ringers.

Pleasant Ringing Tone—Large two-toned gongs provide an ample volume of pleasing, commanding tone quality. The sound output is satisfactory in either house or office.



KELLOGG MASTERPHONES

COMPONENTS AND AUXILIARY ACCESSORIES



Dial Cord and Plug—The dial cord and plug simplify considerably the installation of the dial and the disassembly of the Masterphone. The plug is a polarized design adapted to fit into pin-type jack terminals on the Interconnecting Block. The four-conductor dial leads are spade tipped for simplified connection; are color coded, rubber insulated.



DIAL—Where a telephone dial is required, the Masterphone will be equipped with a dial modern in beauty and design, quiet and rugged. No dial is so easy to install or service as this new dial . . . the Kellogg Master-Dial. Its ability to maintain accurate "make-break" ratios through many millions of impulses without adjustment prove its fine precision and efficiency.

Three dials are available. The standard dial incorporates a white porcelain enameled plate numbered in black digits from 1 to 0. The metropolitan dial is numbered with black letters and red digits. A dial providing for operator signaling is numbered 1 to 0 with the word "Operator" incorporated with the "0" digit.

The dial for the 1000 Series Masterphone is complete with a four conductor dial cord and plug, the rubber insulated conductors are coded red, black, green and white. One end of the cord is screw terminated at the dial; the other is equipped with the four prong plug which inserts into the Interconnecting Block.

Where a Masterphone does not require a dial, a dummy plug, a protected subscriber's number card, and a metal lock ring are installed in the dial opening.



Relay—The Vincent Rare Gas Relay is recommended as an auxiliary accessory to the Masterphone where desired. It is an electronic device mountable in any position and is relatively unaffected by atmospheric or temperature conditions. It is intended for grounded ringing applications where the line is desired to be ground free to reduce induced currents. May be used on frequency selective systems such as harmonic ringing; and also for straight line and biased ringing. The relay provides clearer transmission and added protection against lightning. The initial cost is low—maintenance cost is negligible.



Vacuum Tube—A vacuum tube is furnished as an auxiliary accessory where desired, intended for use primarily on grounded ringing lines where superimposed or pulsating ringing current is employed for four-party selective and eight-party semi-selective biased ringing systems.

11 KELLOGG MASTERPHONES *How to Order*

Ordering Charts — It's easy to order the Kellogg 1000 Series Masterphones. With all the possible telephone variations, it is important to read and to understand the ordering procedure prescribed in the following paragraphs. Proper ordering will facilitate prompt order entry and cut delay in shipment.

On page 10 are code charts to be used in ordering *Manual* telephones. On page 11 are code charts for *Dial* telephones.

How to Use the Ordering Charts — Determine the class of service and refer to the ordering chart on page 10 or 11 covering that class. Then follow the three simple procedures outlined in the following example.

Select the four digit basic code number of the telephone desired . . . desk or wall style.

Suffix the type of ringer desired. (See ringer code chart below.) In cases where a ringer is not required, suffix ".LR."

Suffix "K" if the Coiled Kord is desired in place of the standard fabric handset cord.

ORDERING NUMBER: 1100-HB1-K

STYLE		TYPES OF RINGERS				
DESK	WALL	BIASED RINGERS	HARMONIC RINGERS	STRAIGHT LINE RINGERS	LESS RINGER	KOILED KORD
1000 * 1001 (with "Press-to-Talk" Switch)	1100 * 1101 (with "Press-to-Talk" Switch)		HB-1		.LR	-K

* If the auxiliary "Press-to-Talk" Switch is desired, select one of these basic code numbers.

NOTE

The code charts listed on page 11 for dial service incorporate basic code numbers like D-1000, D-1021, etc. The prefix "D-" always indicates that on all instruments thus coded, a *standard dial* is furnished. This standard dial is faced with numbers 1 to 0. Where the metropolitan dial (both letters and numbers) is required, order: D-1000-BA-K-10*G Dial*. A dial is also furnished with numbers from 1 to 0 with the word "operator" faced on the plate along with the "0" digit. Order: D-1000-BA-K-10*DO Dial*.

Ringer Codes — Ringer codes may be determined from the following chart. Select the proper biased or harmonic ringers for common battery service; biased or straight line ringers for magneto service.

BIASED RINGERS	HARMONIC RINGERS		STRAIGHT LINE RINGERS
BA—High Impedance BB—Medium Impedance BC—Low Impedance	HA1—33½ Cycle HA2—50 Cycle HA3—66½ Cycle HA4—167½ Cycle HA5—25 Cycle	HB1—30 Cycle HB2—42 Cycle HB3—54 Cycle HB4—66 Cycle HB5—16 Cycle	HC1—20 Cycle HC2—60 Cycle SA—High Impedance SB—Medium Impedance SC—Low Impedance

Proper Selection of Ringers — Harmonic Ringers should be selected by their frequency application. Biased and Straight Line Ringers should be selected for the particular line applications. BA ringers are recommended for all dial and heavily loaded manual lines, but should not be mixed with ringers of a resistance less than 2500 Ohms. BB ringers are recommended if present ringers on a line have a resistance of over 1500 Ohms and under 3000 Ohms. BC ringers are recommended if present ringers on a line have a resistance of over 500

Ohms to 1500 Ohms. SA-SB-SC ringers for magneto applications are selected in the same manner as indicated for Biased Ringers.

The Kellogg 1000 Series Masterphones are also available less the ringer for extension service. They are also furnished less the induction coil, the condenser, and the ringer in stripped or partially stripped instruments for use with existing common battery and magneto desk set boxes.

KELLOGG MASTERPHONES MANUAL



DESK

The basic code number of the Desk model Manual Masterphone is NO. 1000. The basic code number of the Wall model is NO. 1100. Both Desk and Wall models are equipped with a dummy dial plug.

WALL



COMMON BATTERY MASTERPHONES — MANUAL

Come in biased and harmonic ringers.

STYLE		TYPES OF RINGERS				COILED KORD
DESK	WALL	BIASED RINGERS	HARMONIC RINGERS	STRAIGHT LINE RINGERS	LESS RINGER	
1000 1001 (with "Press-to-Talk" Switch)	1100 1101 (with "Press-to-Talk" Switch)	-BA -BB -BC	-HA1, 2, 3, 4 or 5 -HB1, 2, 3, 4 or 5 -HC1 or 2		-LR	-K

COMMON BATTERY SIGNALLING — LOCAL BATTERY TALKING MASTERPHONES — MANUAL

Come in biased and harmonic ringers.

STYLE		TYPES OF RINGERS				COILED KORD
DESK	WALL	BIASED RINGERS	HARMONIC RINGERS	STRAIGHT LINE RINGERS	LESS RINGER	
1020 1021 (with "Press-to-Talk" Switch)	1120 1121 (with "Press-to-Talk" Switch)	-BA -BB -BC	-HA1, 2, 3, 4 or 5 -HB1, 2, 3, 4 or 5 -HC1 or 2		-LR	-K

STRIPPED COMMON BATTERY MASTERPHONES — FOUR CONDUCTOR — MANUAL

For use with Triad Circuit Common Battery Desk Boxes equipped with induction coil, condenser, and ringer. (Nos. 610-BA, -HA, -HB—desk set boxes may be ordered for these styles.)

STYLE		TYPES OF RINGERS	COILED KORD
DESK	WALL		
1060 1061 (with "Press-to-Talk" Switch)	1160 1161 (with "Press-to-Talk" Switch)	These styles not equipped with ringers	K

STRIPPED MAGNETO OR COMMON BATTERY MASTERPHONES — THREE CONDUCTOR — MANUAL

For use with Booster Circuit Magneto, or Common Battery Desk Set Boxes, that are equipped with an Induction Coil, Condenser, and Ringer. (Nos. 2300 and 3300 magneto, and No. 602 common battery desk set boxes may be ordered for these Masterphones.)

STYLE		TYPES OF RINGERS	COILED KORD
DESK	WALL		
1062 1063 (with "Press-to-Talk" Switch)	1162 1163 (with "Press-to-Talk" Switch)	These styles not equipped with ringers	-K

MAGNETO SERVICE MASTERPHONES — MANUAL ONLY

These Masterphones are furnished with either Straight Line, or Biased ringers, for use with No. 1200 Series Hand Generator Boxes.

STYLE		TYPES OF RINGERS		COILED KORD
DESK	WALL	BIASED RINGERS	STRAIGHT LINE RINGERS	
1040 1041 (with "Press-to-Talk" Switch) *1050	1140 1141 (with "Press-to-Talk" Switch) *1150	-BA -BB -BC	-SA -SB -SC	-K

*These styles come less the condenser.

HAND GENERATOR BOXES

(No. 1200 Series)



- No. 1203 — 3 Bar Hand Generator Box
- No. 1205 — 5 Bar Hand Generator Box
- No. 1206 — 6 Bar Hand Generator Box

KELLOGG MASTERPHONES

DIAL



DESK

The basic Code number of the *Desk* model Dial Masterphone is D-1000. The basic Code number of the *Wall* model is D-1100. Both desk and wall models are equipped with Kellogg Master-Dials.



WALL

COMMON BATTERY MASTERPHONES—DIAL

Come in biased and harmonic ringers.

STYLE		TYPES OF RINGERS				KOILED KORD
DESK	WALL	BIASED RINGERS	HARMONIC RINGERS	STRAIGHT LINE RINGERS	LESS RINGER	
D-1000 D-1001 (with "Press-to-Talk" Switch)	D-1100 D-1101 (with "Press-to-Talk" Switch)	-BA -BB -BC	-HA1, 2, 3, 4 or 5 -HB1, 2, 3, 4 or 5 -HC1 or 2		-LR	-K

COMMON BATTERY SIGNALLING—LOCAL BATTERY TALKING MASTERPHONES—DIAL

Come in biased and harmonic ringers.

STYLE		TYPES OF RINGERS				KOILED KORD
DESK	WALL	BIASED RINGERS	HARMONIC RINGERS	STRAIGHT LINE RINGERS	LESS RINGER	
D-1020 D-1021 (with "Press-to-Talk" Switch)	D-1120 D-1121 (with "Press-to-Talk" Switch)	BA -BB -BC	-HA1, 2, 3, 4 or 5 -HB1, 2, 3, 4 or 5 -HC1 or 2		-LR	K

STRIPPED COMMON BATTERY MASTERPHONES—FOUR CONDUCTOR—DIAL

For use with Triad Circuit Common Battery Desk Set Boxes equipped with induction coil, condenser, and ringer. (Nos. 610-BA, -HA, -HB desk set boxes may be ordered for these styles.)

STYLE		TYPES OF RINGERS	KOILED KORD
DESK	WALL		
D-1060 D-1061 (with "Press-to-Talk" Switch)	D-1160 D-1161 (with "Press-to-Talk" Switch)	These styles not equipped with ringers	-K

STRIPPED COMMON BATTERY MASTERPHONES—THREE CONDUCTOR—DIAL

For use with Booster Circuit Common Battery Desk Set Boxes where desk set boxes are equipped with induction coil, condenser and ringer. (No. 602 common battery boxes may be ordered for these styles.)

STYLE		TYPES OF RINGERS	KOILED KORD
DESK	WALL		
D-1062 D-1063 (with "Press-to-Talk" Switch)	D-1162 D-1163 (with "Press-to-Talk" Switch)	These styles not equipped with ringers	-K

MAGNETO SERVICE MASTERPHONES—MANUAL ONLY

Four conductor, less condenser and ringer, for use with No. 3500 Series Hand Generator Boxes.

These Masterphones can also be used as extension telephones with any existing magneto installations.

STYLE		TYPES OF RINGERS	KOILED KORD
DESK	WALL		
1040-LR 1040C-LR (Equipped with Condenser)	1140-LR 1140C-LR (Equipped with Condenser)	These styles not equipped with ringers	-K

HAND GENERATOR BOXES

No. 3500 Series (formerly coded No. 2500)



- No. 3528—Equipped with 3 Bar Generator and 1000 Ohm Ringer
- No. 3561—Equipped with 5 Bar Generator and 1600 Ohm Ringer
- No. 3562—Equipped with 5 Bar Generator and 2500 Ohm Ringer

KELLOGG MASTERPHONES

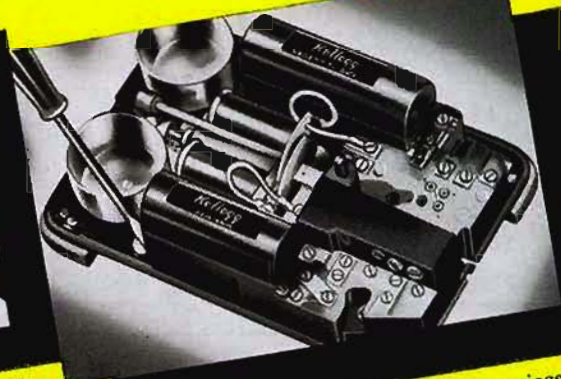
INSTALLATION AND SERVICING

INSTALLATION AND SERVICING—The new Kellogg 1000 Series Masterphone is a telephone man's telephone. It may be installed, serviced or adapted to any subscriber need in a matter of seconds—and with the aid of just an ordinary screw driver. Here's how:



1

Loosen one screw—off comes the housing for rapid changeover from desk to wall type or vice versa. This feature makes the Masterphone completely versatile; a few components adapt the instrument to all classes of subscriber services.



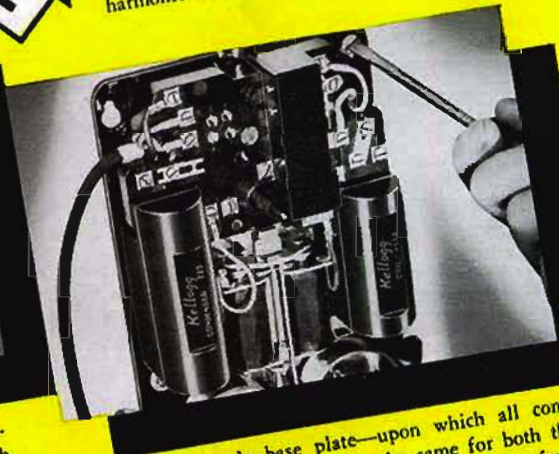
2

Remove two screws—off comes the ringer. The class of service changeover may be effected by reinstalling the desired biased, harmonic or straight line ringer.



3

Just unplug—the induction coil or condenser from the pin jacks to replace. Both plug into the circuit like a tube into a radio.

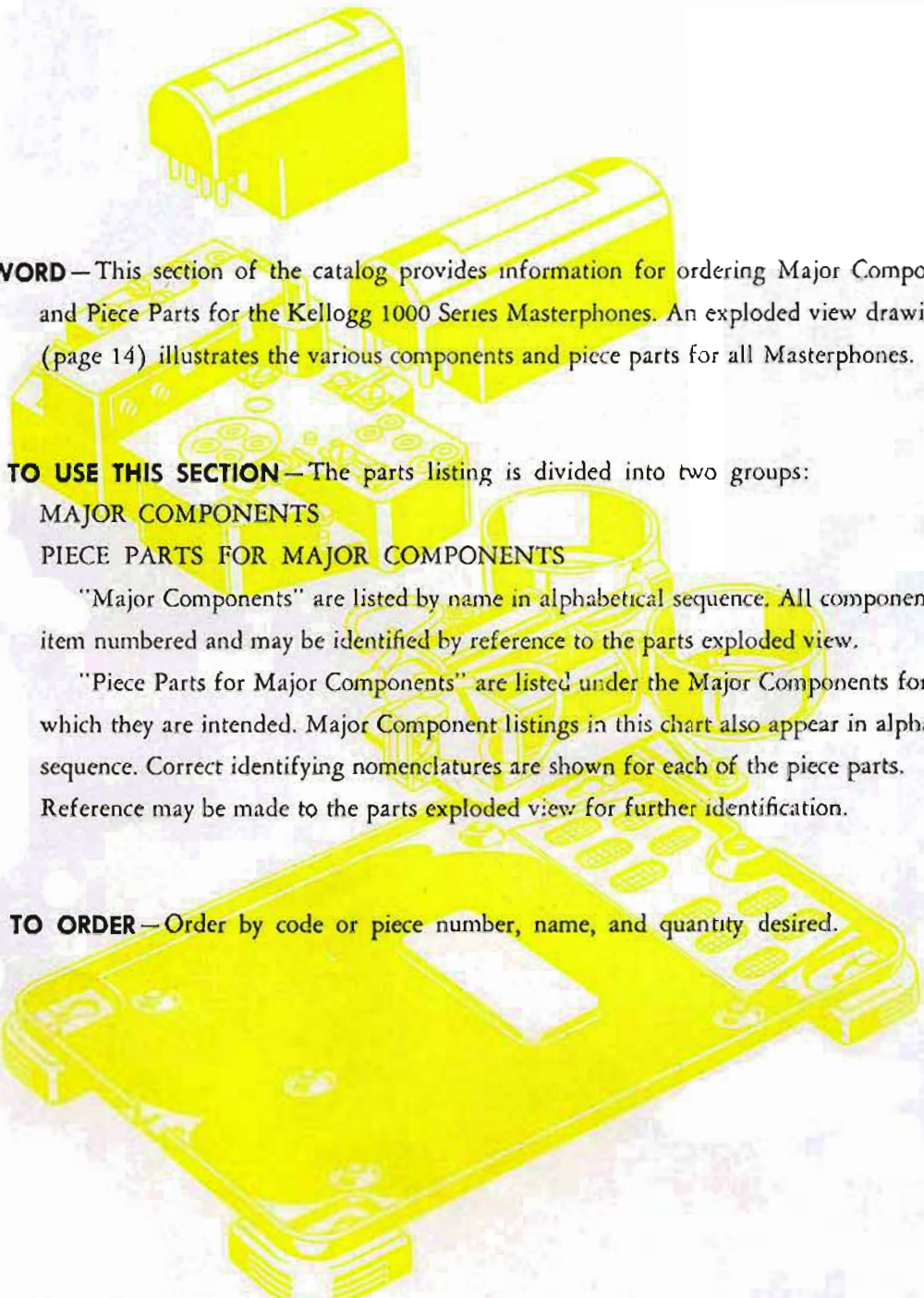


4

The single base plate—upon which all components are mounted is the same for both the desk type and the wall type. In converting from the desk to the wall type, merely remove the rubber feet from the base plate, mount on the wall with four screws, replace the wall housing.

KELLOGG MASTERPHONES

PARTS SECTION



FOREWORD—This section of the catalog provides information for ordering Major Components and Piece Parts for the Kellogg 1000 Series Masterphones. An exploded view drawing (page 14) illustrates the various components and piece parts for all Masterphones.

HOW TO USE THIS SECTION—The parts listing is divided into two groups:

MAJOR COMPONENTS

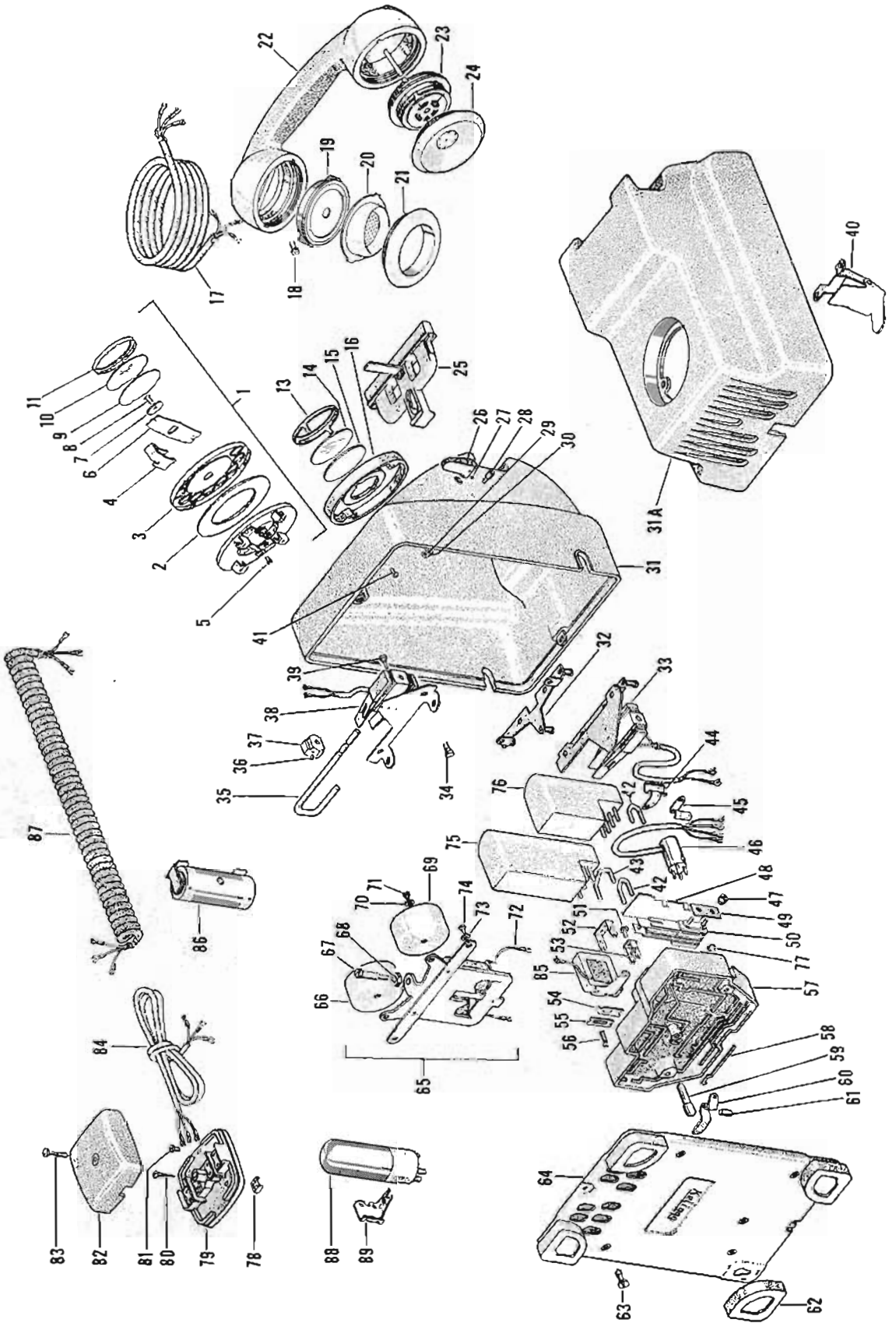
PIECE PARTS FOR MAJOR COMPONENTS

"Major Components" are listed by name in alphabetical sequence. All components are item numbered and may be identified by reference to the parts exploded view.

"Piece Parts for Major Components" are listed under the Major Components for which they are intended. Major Component listings in this chart also appear in alphabetical sequence. Correct identifying nomenclatures are shown for each of the piece parts. Reference may be made to the parts exploded view for further identification.

HOW TO ORDER—Order by code or piece number, name, and quantity desired.

KELLOGG MASTERPHONES
PARTS ILLUSTRATION



KELLOGG MASTERPHONES

PARTS LIST

MAJOR COMPONENTS

	MADE UP OF ITEM NUMBER(S)	PIECE OR CODE NUMBER
BASE PLATES		
With rubber feet for desk models	62, 63, 64	64880
Less rubber feet for wall models	64	64879
CONDENSER		
For 0.5 or 1.0 Microfarad capacities	75	225
See "Attaching Parts" for Straps when Condenser is not used. (Item 43, Pc. 69559)		
CORDS		
2-Conductor Cord for "Press-to-Talk" Switch	See Item 33	6958-1
3-Conductor Base Cord for No. 25B Connecting Block (See No. 10 Catalog)		ES3737
3-Conductor Base Cord for No. 27 Connecting Block	84	769MFP
3-Conductor Handset Cord for No. 46-C Handset	17	770MFP
3-Conductor Coiled Cord for No. 47-C Handset	87	4001-1
4-Conductor Base Cord for No. 25A Connecting Block (See No. 10 Catalog)		ES3738
4-Conductor Base Cord for No. 27 Connecting Block	84	771MFP
4-Conductor Dial Cord and Plug for No. 10D, 10DO, 10G Dials	46	64984
DIALS		
Numbered 1 to 0	1	10-D
Numbered 1 to 0 with "Operator" faced over the "0" digit	1	10-DO
Numbered 1 to 0 and Lettered A to Z	1	10-G
DUMMY PLUG ASSEMBLY		
For Dial Opening in Desk and Wall Housings	13 thru 16	64967
HANDSETS		
With standard fabric cord	17, 18, 19, 20, 21, 22, 23, 24	46-C
With Coiled Cord	18, 19, 20, 21, 22, 23, 24, 87	47-C
HOUSINGS*		
Desk, with Plunger Bar, Bracket and Screws	25, 31, 32, 34	64892
*Desk, with Plunger Bar, Bracket, Screws, and "Press-to-Talk" Switch	25 thru 32, 34 thru 39	69535
Wall, with Plunger Bar, Bracket, Switch Arm, and Screws	25, 31A, 32, 34, 40	64805
*Wall, with Plunger Bar, Bracket, Switch Arm, Screws, and "Press-to-Talk" Switch	25 thru 31A, 33 thru 37, 39, 40	69536
INDUCTION COILS		
For Common Battery Signaling—Common Battery Talking	76	113A
For Common Battery Signaling—Local Battery Talking	76	114A
For Local Battery Signaling—Local Battery Talking	76	114A
INTERCONNECTING BLOCK		
For all circuit applications—All telephones	47 thru 61	64910
LINE CONNECTING BLOCKS		
Four point—Used with 769MFP and 771MFP Line Cords	78 thru 83	27
Three point—Used with ES3737 Line Cord	See No. 10 Catalog	25B
Two point—Used with ES3738 Line Cord	See No. 10 Catalog	25A
RETARD COIL		
For holding CB equipment on LB talking telephones	85	64-A
RINGERS		
<i>Biased</i>		
<i>D. C. Resistance</i>		
High Impedance	4000 ohms	65
Medium Impedance	2500 ohms	65
Low Impedance	1000 ohms	65
<i>Harmonic</i>		
33 1/3 cycles	1000 ohms	65
50 cycles	1000 ohms	65
66 2/3 cycles	1000 ohms	65
16 2/3 cycles	2500 ohms	65
25 cycles	2500 ohms	65
30 cycles	2500 ohms	65
42 cycles	1000 ohms	65
54 cycles	1000 ohms	65
66 cycles	1000 ohms	65
16 cycles	2500 ohms	65

*If housings are to be used with Dial order also Clamp, Pc. 64864 (Item 45) under "Attaching Parts."
 **Order also Clamp, Pc. 69585 (Item 44) for the "Press-to-Talk" Switch Cord.

KELLOGG MASTERPHONES
PARTS LIST
MAJOR COMPONENTS (Cont'd)

RINGERS (Cont'd)		MADE UP OF ITEM NUMBER(S)	PIECE OR CODE NUMBER
<i>Harmonic (Cont'd)</i>			
20 cycles	D. C. Resistance 2500 ohms	65	122-HC1
60 cycles	1000 ohms	65	122-HC2
<i>Straight Line</i>			
High Impedance	4000 ohms	65	123-SA
Medium Impedance	2500 ohms	65	123-SB
Low Impedance	1000 ohms	65	123-SC
<i>Accessories</i>			
*Relay, Vincent Rare Gas—for reducing line induction on divided ringing circuits		86	RTC-2
†Tube, Western Electric cold cathode Vacuum, for polarity selective ringing with Biased ringers		88	333-A
Bracket, for mounting Vacuum Tube or Vincent Relay		89	64979
ATTACHING PARTS			
Clamp, for holding "Press-to-Talk" switch cord against Desk housings		44	69585
Clamp, for holding dial cord against housings and for "Press-to-Talk" on the Wall housing		45	64864
Lockwasher, for mounting Ringer		73	64965
Screw, for Dummy Plug or Dial mounting		41	64867
Screw, Binding head machine, for Ringer Mounting		74	64871
Screw, for Interconnecting Block Mounting		77	64870
Strap, for dial jacks 2-0 and for stripped telephones		42	64865
Strap, used when condenser is not used		43	69559

Order Kit No. 100 for Relay and Mounting Bracket. †Order Kit No. 101 for Tube and Mounting Bracket.

PIECE PARTS FOR MAJOR COMPONENTS

BASE PLATE PARTS			
Rubber Foot Assembly		62	64882
Lock Screw, Desk Housing		63	64868
Base Plate with Screen (less feet for wall styles)		64	64879
DIAL PARTS			
Numeral Ring Assembly (numerals only—used on the 10-D Dial)		2	68985
Numeral Ring Assembly (numerals only and "operator"—used on the 10-DO Dial)		2	70336
Numeral Ring Assembly (numerals and letters—used on the 10-G Dial)		2	69056
Plate, Standard Finger, (Black finish)		3	70102
Plate, Finger (Chrome finish)		3	69012
Stop, Finger		4	69002
Screw, Filler Head Machine, for mounting finger stop		5	70363
Spring, Bezel		6	69008
Washer, Dial		7	69009
Screw, Flat Head Machine		8	69010
Card, Number		9	64972
Protector, Celluloid		10	64969
Ring, Retaining		11	69011
See "Attaching Parts" for Dial mounting Screws, Item 41, Pc. 64867.			
DUMMY PLUG PARTS			
Ring, Retaining		13	64970
Protector, Number Card		14	64969
Card, Number		15	64972
Plug, Dummy		16	64968
See "Attaching Parts" for Dummy Plug mounting Screws, Item 41, Pc. 64867.			
HANDSET PARTS			
Card, Fabric, for the 46-C Handset		17	770MFP
Card, (Coiled Cord) for the 47-C Handset		87	4001-1
Scissors, Terminating, and for anchoring Handset cords		18	60788
Transmitter		19	66521
Mouthpiece		20	62505
Ring, Mouthpiece		21	55369
Handset Body Assembly		22	61888
Receiver		23	89-A
Cap, Ear		24	69426
HOUSING PARTS			
Bar, Plunger, for all Housings except Desk "Press-to-Talk" (Order also Pc. 64810, Item 52, when ordering Plunger Bar for desk and wall housing; Pc. 69550, Item 33, when ordering Plunger Bar for wall "Press-to-Talk" housings)		25	64819

KELLOGG MASTERPHONES

PARTS LIST

PIECE PARTS FOR MAJOR COMPONENTS (Cont'd)

HOUSING PARTS (Cont'd)

	MADE UP OF ITEM NUMBER(S)	PIECE OR CODE NUMBER
Bar Assembly, Plunger, for Desk Housing with "Press-to-Talk" (Order also Pc. 69514, Item 32)		25 69518
Lever, Thumb, for all Housings with "Press-to-Talk"		26 69519
Screw, Hexagon Head Socket, for all Housings with "Press-to-Talk"	27 and	36 69521
Stud, for all Housings with "Press-to-Talk"		28 69868
Lockwasher, Stud Mounting for all Housings with "Press-to-Talk"		29 63766
Nut, Stud Mounting for all Housings with "Press-to-Talk"		30 63952
Housing, for Desk Styles <i>less</i> "Press-to-Talk"		31 64800
Housing, for Desk Styles <i>with</i> "Press-to-Talk"		31 69533
Housing, for Wall Styles <i>less</i> "Press-to-Talk"	31-A	64801
Housing, for Wall styles <i>with</i> "Press-to-Talk"	31-A	69534
Plunger Bar Support Bracket Assembly, for Desk and Wall Styles <i>less</i> "Press-to-Talk" (order also Pc. 64819 Item 25)		32 64810
Plunger Bar Support Bracket Assembly, for Desk Style <i>with</i> "Press-to-Talk" (order also Pc. 69518 Item 25)		32 69514
Plunger Bar Support Bracket and Switch Assembly, for Wall Style <i>with</i> "Press-to-Talk" (order also Pc. 64819 Item 25)		33 69530
Switch, Bracket and Cord Assembly, for Desk Style with "Press-to-Talk"		38 69509
Switch Cord Assembly, for all Housings with "Press-to-Talk"	see 33 and	38 69584
Screw, Bracket Mounting for all Housings		34 64820
Arm, Actuating, for all Housings with "Press-to-Talk"		35 69510
Cam, for all Housings with "Press-to-Talk"		37 69511
Screw, Flat Fillister Head Machine, for all Housings with "Press-to-Talk"		39 69512
Switch Arm Assembly, for all Wall Housings		40 64814

INTERCONNECTING BLOCK PARTS

Nut, Spring Assembly	47	64853
Cover, Spring Assembly	48	64856
Plate	49	65890
Spring Assembly	50	64833
Screw, Terminal, Single and Double	51	63262
Terminal, Screw, Double	52	64911
Terminal, Screw, Single	53	64912
Link, for Induction Coil	54	64915
Link, for Condenser; and also for bridged or divided ringing applications	55	64914
Terminal, Pin Plug	56	
Sub-Base (Not furnished separately—Order Pc. 64910)	57	
Wiring Network, Grid Type (Not furnished separately)	see bottom of	57
Wire	58	
Plunger, Switch Hook (Always specify material of plunger being replaced—Bakelite or Metal)	59	64852
Switch Lever Assembly (Always specify material of plunger—Bakelite or Metal)	60	64891
Pin, Pivot	61	64850
See "Attaching Parts" for Interconnecting Block mounting Screws, Item 77, Pc. 64870.		
See "Attaching Parts" for Strap (Item 42, Pc. 64865) for Manual Telephones to close Dial jacks 2-4		

LINE CONNECTING BLOCK (No. 27 only)

Nut, Speed	78	69115
Base	79	69111
Screw, Line Connecting Block Mounting	80	60409
Screw, Cord Terminal	81	69117
Cover and Screw Assembly	82 and	83 69114
Screw only, Cover Mounting	83	69113

RINGER PIECE PARTS

Gong, Light Thickness	66	64935
Screw, Tone Control Adjusting	67	64936
Nut, Adjusting Screw	68	64934
Gong, Heavy Thickness	69	64934
Lockwasher, Gong Mounting	70	64965
Screw, Binding Head Machine, Gong Mounting	71	64871
Wire Assembly, Black	72	64963
Wire Assembly, Red	72	64964
See "Attaching Parts" for Ringer mounting screws, Item 74, Pc. 64871—and lockwasher, Item 73, Pc. 64965.		

TOOLS, MAINTENANCE

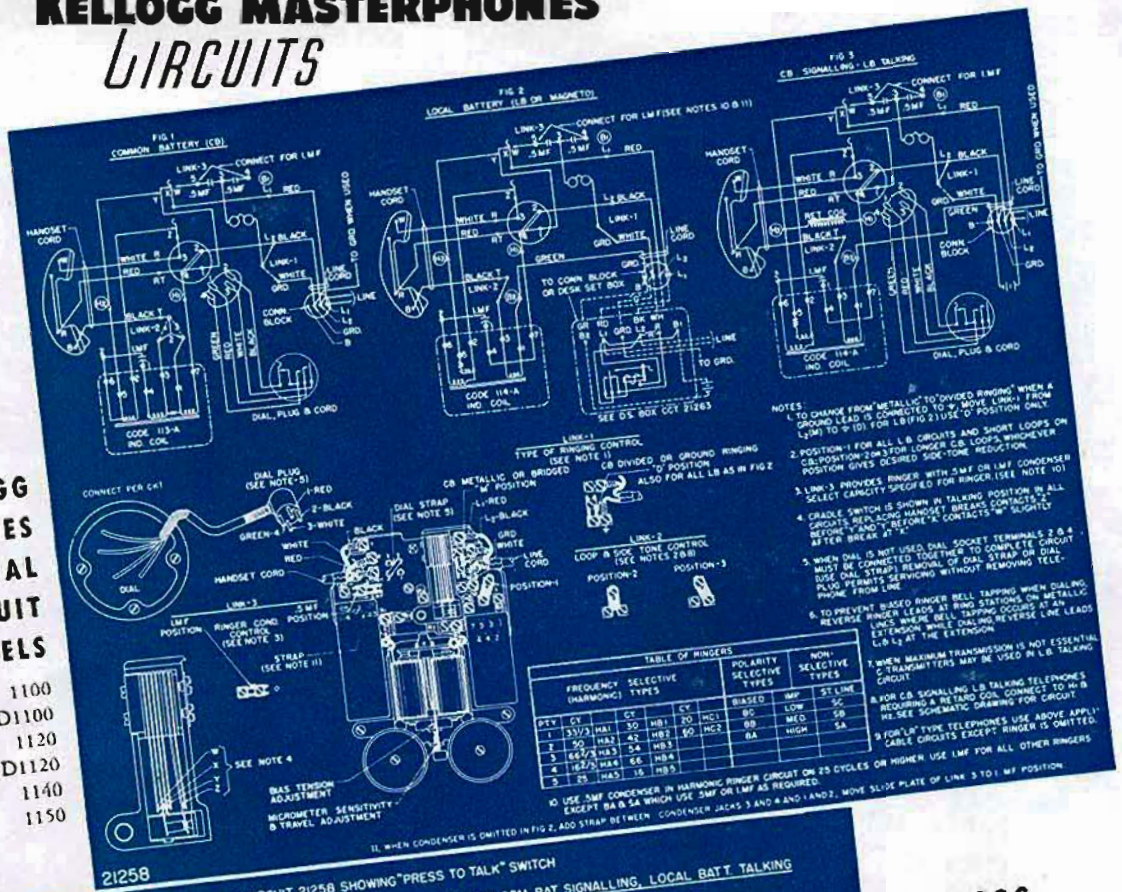
Tool used for the Ringer Adjustment Screw (Item 67)	85
Tool used for the Retaining Ring (Item 11)	86
Wrench used for the Socket Screw (Items 27 and 36)	90

*For Support Bracket Assembly alone, order Pc. 64810. For Switch Assembly alone, order Pc. 69529.

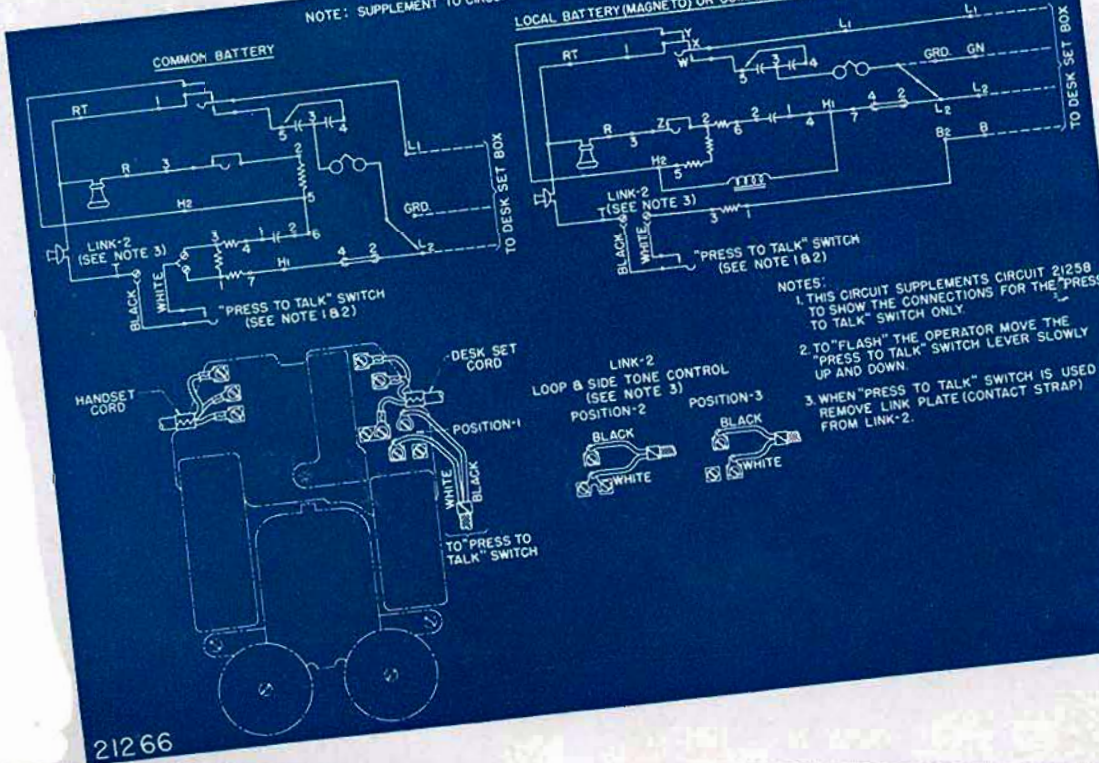
KELLOGG MASTERPHONES CIRCUITS

KELLOGG 1000 SERIES UNIVERSAL CIRCUIT FOR MODELS

1000	1100
D1000	D1100
1020	1120
D1020	D1120
1040	1140
1050	1150



21258 NOTE: SUPPLEMENT TO CIRCUIT 21258 SHOWING "PRESS TO TALK" SWITCH LOCAL BATTERY (MAGNETO) OR COM. BAT. SIGNALING, LOCAL BATT. TALKING



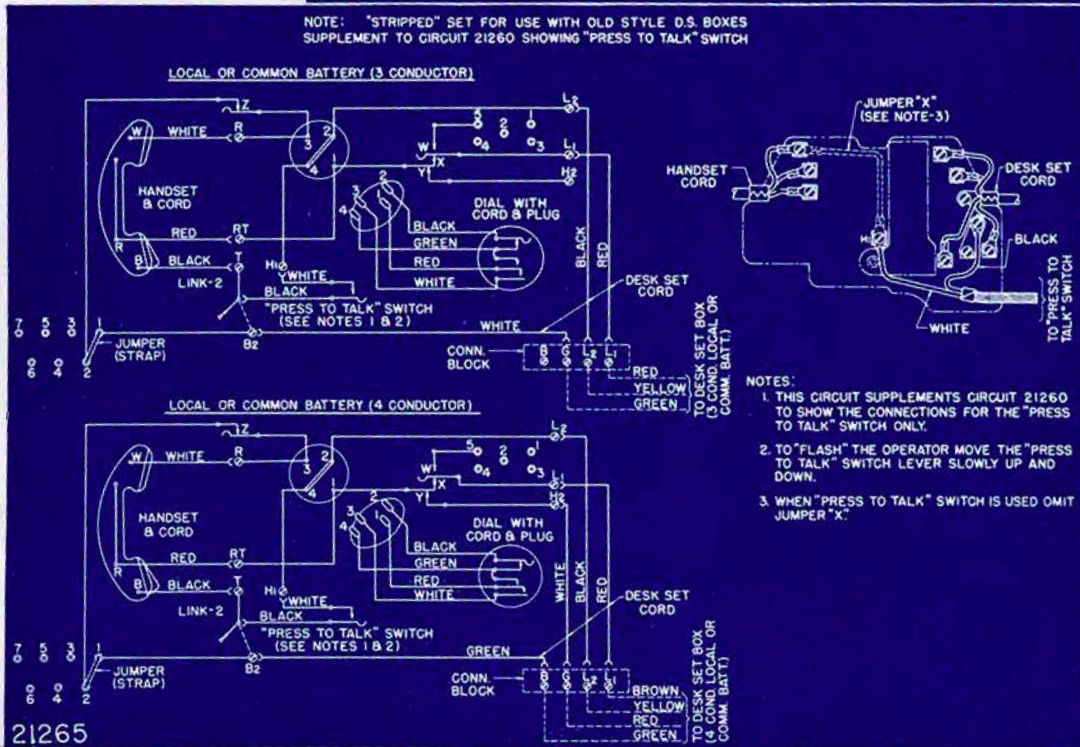
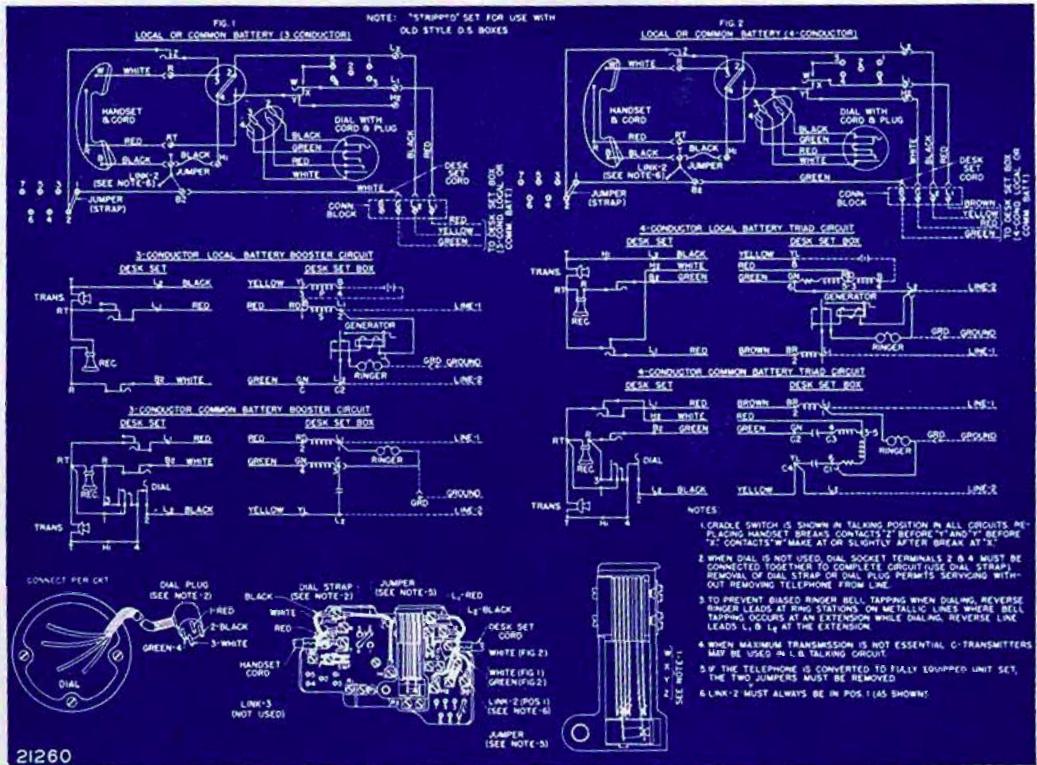
KELLOGG 1000 SERIES UNIVERSAL CIRCUIT FOR MODELS

1001	1101
D1001	D1101
1021	1121
D1021	D1121
1041	1141

KELLOGG MASTERPHONES CIRCUITS

**KELLOGG
1000 SERIES
UNIVERSAL
CIRCUIT
FOR MODELS**

1060	1160
D1060	D1160
1062	1162
D1062	D1162

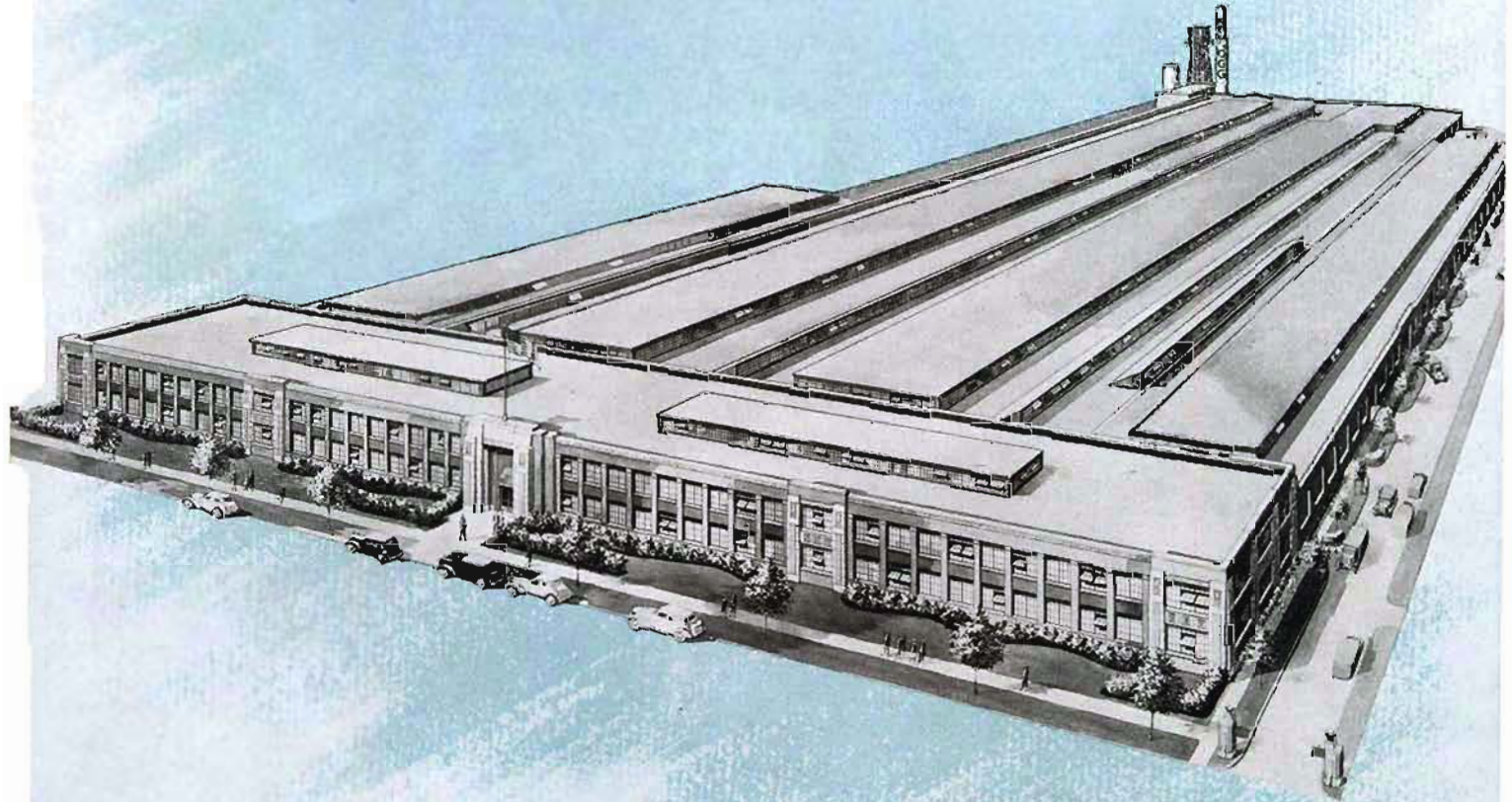


**KELLOGG
1000 SERIES
UNIVERSAL
CIRCUIT
FOR MODELS**

1061	1161
D1061	D1161
1063	1163
D1063	D1163



JAMES H. KELLOGG
3rd Generation of the Kellogg
Family to serve as President,
Kellogg Switchboard & Supply
Company.



Leader in the telephone field

KELLOGG SWITCHBOARD & SUPPLY CO.
6650 SO. CICERO AVE. . . . CHICAGO 38, ILL.



**THE KELLOGG
MASTERPHONE**

COMPARE THE

Masterphone



FOR
EASY INSTALLATION
LOW MAINTENANCE
SUBSCRIBER APPROVAL
DEPENDABLE OPERATION

A Masterpiece of Efficiency



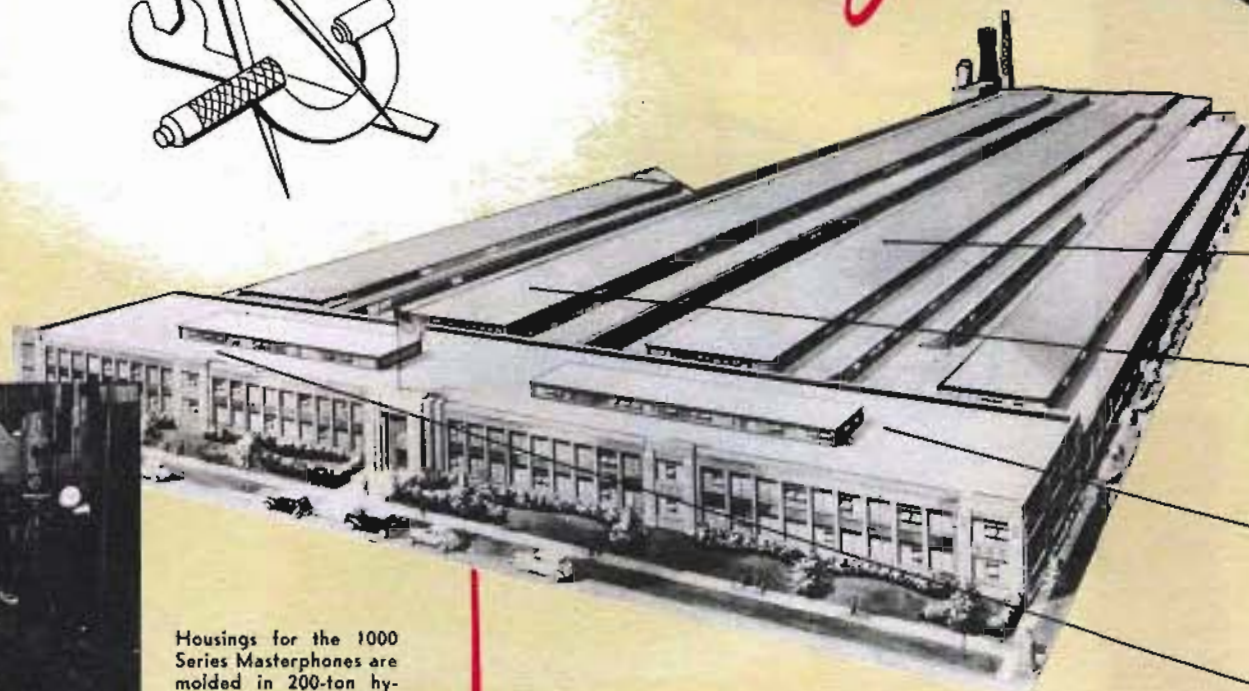
Barbara Bates appearing in the Hal Roach Cinecolor feature comedy "The Fabulous Joe."

- One Base Plate for both Desk and Wall Masterphones. Housings interchangeable in a matter of seconds.
- One Universal Anti-Side Tone Triad Circuit for all service applications. Never necessary to change permanent wiring. Color codes, physical circuit changes, and complicated servicing completely eliminated.
- Plug-In Type Induction Coil, Condenser, and Dial Plug. Complete elimination of soldering and unsoldering reduces maintenance costs to a minimum.
- Induction Coil provides best ratio between side-tone reduction, and transmission and reception. Three way switch permits matching induction coil to long or medium loops, and reduces transmitter current supply on short loops.
- One Condenser for all applications. Microfarad capacities of 0.5 or 1.0 mfd. provided by means of a simple switching unit.
- Transmitter provides greater electrical output and faithful articulation throughout a wide range of applied voltages. Reliable and dependable under varying temperature and humidity conditions.
- Controlled Response Receiver eliminates objectionable characteristics throughout the voice frequency range. High fidelity voice reproduction is assured.
- Ringing Circuit Selector quickly changes circuit to metallic or divided ringing. Simply shifting the slide link to the desired position adapts the universal circuit to the line installation required.
- Ringer equipped with large two-tone gongs provide maximum sound output of pleasing quality. Micrometer adjustment screw simplifies adjustment for volume and tone control.

Modern Production Methods and Planning



... BRING YOU A GREAT TELEPHONE *The Masterphone*



INSPECTION

ASSEMBLY

FABRICATION

ENGINEERING

ADMINISTRATION



Housings for the 1000 Series Masterphones are molded in 200-ton hydraulic presses, some of which are illustrated.



Here the interconnecting blocks and ringers are mounted to the base plates and the potted condensers and induction coils are plugged into the interconnecting block.



The receiver, most sensitive component of the Masterphone handset, includes 22 parts—some so delicate that they are assembled under a magnifying glass.



Final inspection of the complete instrument is as thorough as the first raw material tests that are made in the extensive Kellogg Laboratory.



Soon these Masterphones will be providing dependable, trouble-free low cost service in thousands of homes and offices throughout the country.

Modern industry recognizes through long experience that efficiency is the most vital factor in gaining and holding customer satisfaction. Kellogg efficiency has been typically reflected in the production of the 1000 Series Masterphone. The Masterphone is the pacesetter for continued high instrument standards, having behind it the skills and foresight which fifty years of service and progress can not but help to bring. If it's the best you want, you want the Masterphone.

KELLOGG SWITCHBOARD AND SUPPLY COMPANY

6650 SOUTH CICERO AVE.
CHICAGO 38, ILLINOIS



1000 Type



D-1000 Type



1100 Type



D-1100 Type



Hand Generator Boxes
No. 1203 3-Bar.
No. 1205 5-Bar.
No. 1206 6-Bar.

IT'S EASY TO ORDER

The Masterphone...

In ordering Kellogg Masterphones follow these two steps. (1) Determine the class of service from chart 1 and select the basic code of the particular instrument you require. (All codes beginning with 10 such as 1000, D-1000, 1062 are desk telephones. All codes beginning with 11 such as 1100, D-1100, 1162 are wall telephones.) (2) Then select the ringer code required from chart 2 and affix this code to the basic code number.

SELECT A BASIC CODE

Common Battery Service		Common Battery Signaling - Local Battery Talking Service		Common Battery — for use with existing Kellogg #610 Triad Circuit type steel desk set boxes		CB service—for use with existing #602 Booster Circuit desk set boxes. Magneto service — for use with existing Kellogg #2300 and superseding #3300 desk set boxes. Also for use with other makes of three conductor desk set boxes.		Magneto service — for use with Kellogg #1200 type Hand Generator Boxes, shown on inside page.		Magneto service — for use with existing Kellogg #2500, and superseding #3500 desk set boxes.	
MANUAL	DIAL	MANUAL	DIAL	MANUAL	DIAL	MANUAL	DIAL	MANUAL		MANUAL	
1000	D-1000	1020	D-1020	1060	D-1060	1062	D-1062	1040		1040-LR	
1100	D-1100	1120	D-1120	1160	D-1160	1162	D-1162	1140		1140-LR	Less Condenser
*1001	*D-1001	*1021	*D-1021	*1061	*D-1061	*1063	*D-1063	*1041		1041-LR	
*1101	*D-1101	*1121	*D-1121	*1161	*D-1161	*1163	*D-1163	*1141		1141-LR	
								1050 } 1150 }	Less Condenser	1040-CLR 1140-CLR 1041-CLR 1141-CLR	With Condenser

*These Masterphones are equipped with the "Press-to-Talk" Switch.

EXAMPLE: D-1000

THEN SELECT A RINGER CODE

Blased Ringers	Harmonic Ringers		Straight Line Ringers
BA—High Impedance BB—Med. Impedance BC—Low Impedance	HA1—33 1/3 cycle HA2—50 cycle HA3—66 2/3 cycle HA4—16 2/3 cycle HA5—25 cycle	H81—30 cycle H82—42 cycle H83—54 cycle H84—66 cycle H85—16 cycle	HC1—20 cycle HC2—60 cycle SA—High Impedance SB—Med. Impedance SC—Low Impedance

EXAMPLE: D-1000-BA

THEN SELECT A KOILED KORD IF DESIRED: (Code-K)

EXAMPLE: D-1000-BA-K

Notes

Notes: The "Press-to-Talk" switch is made available for use on party lines to prevent interference with dialing or ringing impulses should a second party on the line remove the receiver during this interval. It also enables a subscriber to "listen in" on the line after placing a revertive call to ascertain when the ringing has stopped and the called party answers.

Three dials are furnished. The standard dial incorporates a white porcelain enameled plate numbered in black digits from 1 to 0. This dial comes also with digits from 1 to 0, but with the word "Operator" faced over the "0" digit (Code 10-DO). The metropolitan dial is numbered with black letters A to Z and red digits 1 to 0 (Code 10-G). All dial Masterphones are equipped with the standard dial unless otherwise specified. To order either of the latter two dials affix the code number of the dial desired to the telephone code number.

EXAMPLE: D-1000-HA1-10-G

Literature!

If you have not already received a copy of "An X-Ray Study of the Kellogg Masterphones" or "Kellogg Masterphones Catalog" send for them today. Check the item you want, sign and return to us.

1.) The "An X-Ray Study of the Kellogg Masterphones" is a unique presentation which literally takes a telephone apart before your eyes.

2.) The "Kellogg Masterphones Catalog" contains many illustrations and descriptions of major Masterphone components along with parts lists and maintenance procedure.

the new

KELLOGG

Master-Dial



Unsurpassed for

- SMOOTH, QUIET OPERATION
 - EASY, SIMPLE MAINTENANCE
 - RUGGED, LONG-LIFE CONSTRUCTION
- and*
- DEPENDABLE, LOW-COST PERFORMANCE

*It's a Beauty—
Inside and Out—
TURN THE PAGE TO SEE*

AT LAST... *the Dial that Offers* **EVERYTHING** *You Want!*

**A Marvel of Simplicity
and Precision**

**A Thing of Modern Beauty
and Design**

the new

KELLOGG

Master-Dial

At Last—
a **QUIET DIAL**



As soft and smooth as the purr of a kitten—that's the impression you get when you hear the new MASTER-DIAL. Your subscribers will really appreciate the quietness of this modern dial.

The years of research that went into the development of the new Kellogg MASTER-DIAL were devoted to the attainment of one major objective: to design a dial that would give the best service at the lowest cost. That, in turn, would mean better profits for telephone men.

So, in the Kellogg MASTER-DIAL you will be happy to see a basic simplicity of design that makes routine maintenance far easier than in any other dial you have ever seen. You will discover precision parts of the finest materials known, designed to operate and stay in perfect adjustment longer. You will find these parts mounted on a supremely rugged base.

Having achieved the main goal of better service, Kellogg went farther. So, you will find the new MASTER-DIAL unbelievably quiet and smooth in operation. You will appreciate its unusual beauty and impressive appearance—not approached by any dial available today.

Check the high-spots of this new dial briefed on these pages. Then decide to have your Kellogg representative give you the complete story of the amazing new MASTER-DIAL at the earliest possible date.

At Last—
a **RUGGED DIAL**



The extra-rigid mounting base of deep drawn brass eliminates any chance of distortion—provides a perfect base for mounting the precision parts of the MASTER-DIAL. There is comparable ruggedness throughout the dial.

KELLOGG SWITCHBOARD AND SUPPLY COMPANY
6650 South Cicero Avenue, Chicago 38, Illinois
Designers and Builders of Fine Communication Equipment

At Last—
a **BEAUTIFUL DIAL**



The rich permanent beauty of the ebony-black finger plate—the baked-on porcelain numeral ring with easy-to-read figures and letters—make the MASTER-DIAL an extremely attractive dial.

At Last—
an **ACCESSIBLE DIAL**



No dial is so easy to install or maintain as the MASTER-DIAL. For example, you can adjust the drive spring without removing the dial from the telephone.

At Last—
a **DEPENDABLE DIAL**



Exhaustive tests under actual operating conditions, conclusively prove the ability of MASTER-DIALS to maintain highly accurate "make-break" ratios through many millions of impulses.

For More Details
on the NEW KELLOGG
Master-Dial

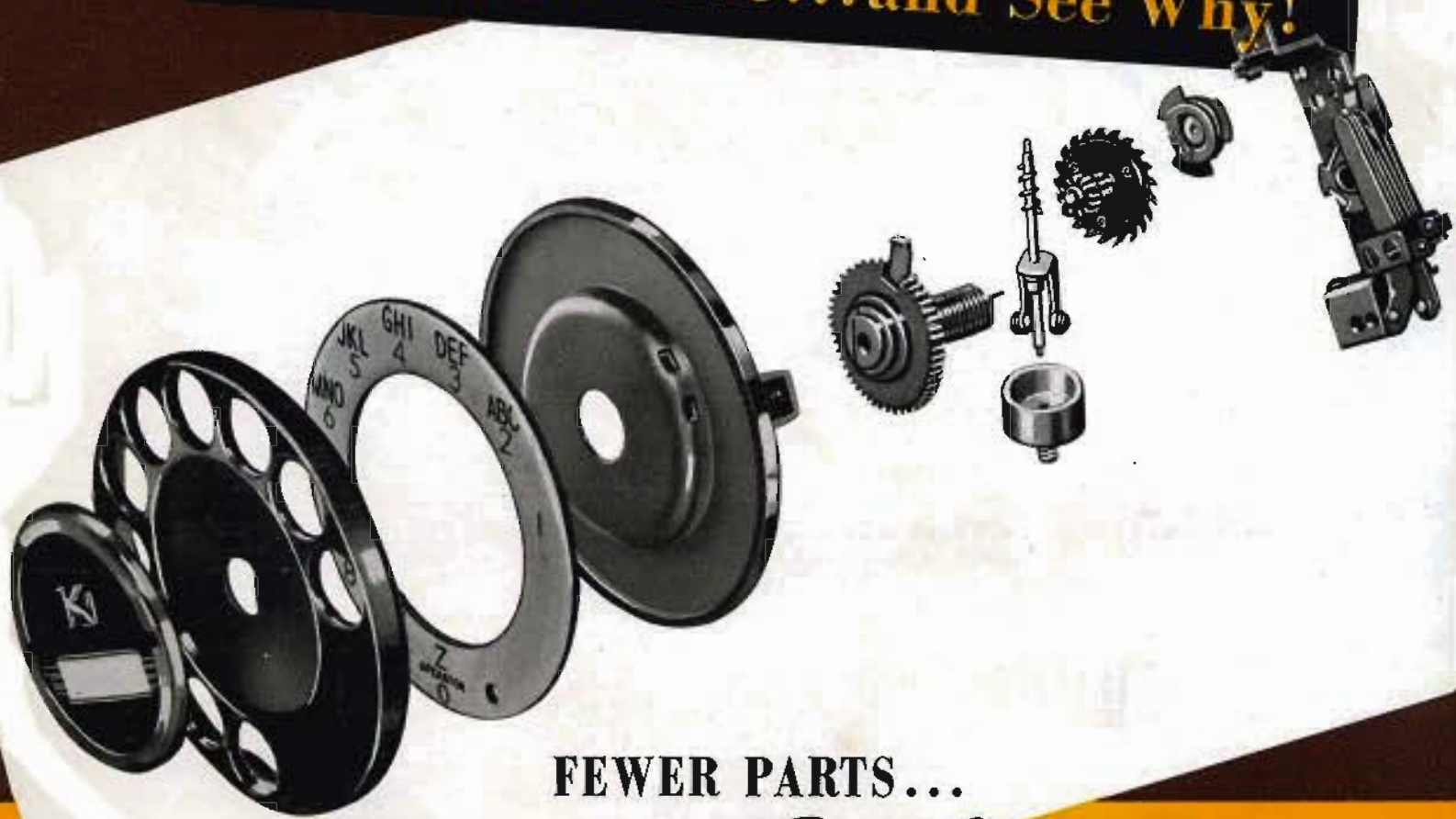
Turn the page

the new **KELLOGG**
Master-Dial

Cuts Maintenance Costs

to the Bone!

Let's Look Inside...and See Why!



FEWER PARTS...
and Better Ones!

Precision, simplicity, durability . . . you get all three to the highest degree in the new MASTER-DIAL. Greater accuracy of operation has been achieved—with fewer components than ever before considered practical—through painstaking refinement of design. To assure continued high standards of performance, every part that goes into this dial is made of the finest materials obtainable. These facts, plus exacting tests to pre-determine ability to stand up under most rigorous conditions, are sound reasons why you can depend on the new MASTER-DIAL for longer, trouble-free service.

Finer on the Face of it, Too!

**Easy-to-Replace
Number Card**

By simply removing the small stainless steel number card retaining ring, the subscriber's number card can easily be replaced.

Enameled Finger Plate

Hard, wear-resistant black enamel covers the finger plate of the new MASTER-DIAL—a rich, looking, practical finish that is baked on. It is not easily scratched or marred. The plate itself is designed for maximum user convenience and greatest possible strength.

**Easy-to-Read,
Durable Numeral Ring**

Bold characters stand out in sharp contrast to the gleaming whiteness of the new MASTER-DIAL's numeral ring. They are fused right into the porcelain, which is baked on the special steel ring. They remain readily disengageable, despite constant use. The numeral ring is easy to clean.



Number Card Retaining Ring

Enameled Finger Plate

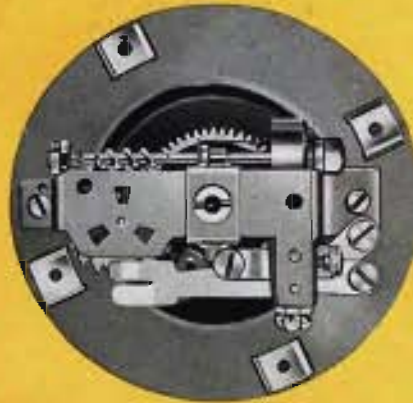
Baked-on Porcelain Numeral Ring

Instant Accessibility **FOR EASIER,
FASTER SERVICING**



So Easy TO GET AT

Most major adjustments can be made on the new MASTER-DIAL without removing it from the telephone. When necessary, however, it can be readily removed as it is mounted to the telephone housing with only 2 screws (sometimes 3). For this same reason, installing the new MASTER-DIAL is easy—takes only a few minutes.



So Easy TO TAKE APART

2 screws are all that you need remove to disassemble the new MASTER-DIAL. Once these are unscrewed, all components are instantly accessible for replacement, or any needed servicing. This is a time and labor saving feature not to be found in any other dial available today.

So Easy TO MAINTAIN



Self-Locking Drive Spring

With an ordinary screwdriver, you can quickly and easily adjust the drive spring without removing the MASTER-DIAL from the telephone. The self-locking feature assures retention of desired adjustment.

**No Disassembly Required
for Speed Adjustment**



Governor Adjustment

With the dial intact, you can increase or decrease dial speed by simple adjustment of the governor weight springs. This, also, is readily accomplished with an ordinary screwdriver.

Rugged Construction **FOR UNMATCHED DURABILITY**



**RIGID Mounting Plate
that Can't Get Out of Shape**

There is no chance of distortion with the extra-rigid mounting plate that serves as a base for the MASTER-DIAL'S precision mechanism. Ruggedly made of deep drawn brass, it never varies in shape under the hardest day-in and day-out service.



TOUGH, Precision-Cut Gears

Closest tolerances are observed in cutting the gears that go into the new MASTER-DIAL. This guarantees years of quiet, trouble-free operation.



SIMPLE Governor Drive Assembly

Quietness and efficiency of the new MASTER-DIAL are due in large measure to the unique construction of this assembly. Pinion and worm drive mesh smoothly and easily to minimize wear on each.



LONG-LIFE Contact Springs

New MASTER-DIAL contact springs are precisely factory-adjusted. Accuracy of adjustment has been retained after millions of impulse operations—with no appreciable variation in "make-break." In those rare instances where adjustments might be needed, they can be made easily and speedily.

Only the Finest Materials



No expense has been spared in the selection of materials which go into the new MASTER-DIAL. From the mounting plate up, only those materials have been used that were proved best for the purpose. Contact springs are made of nickel silver with contacts of precious platinum or palladium. Stainless steel or plated parts are used wherever corrosion is a factor.

Quiet



AS A KITTEN'S PURR...
and JUST AS SMOOTH



ROUND-CONTACT Worm Screw

The new MASTER-DIAL'S worm screw is so precisely manufactured that sharp edges are eliminated, thereby materially lessening wear on the worm drive gear and providing noiseless operation.

SILENT WORM DRIVE GEAR

The mesh between the worm drive gear and the worm screw is virtually soundless. The gear is exceptionally tough, long-wearing and non-sticking. Because its action on the worm screw is so gentle, highest efficiency of governor operation is consistently maintained.



PRECISION-FIT Drive and Pinion Gears

The painstaking touch of the craftsman is reflected in the drive and pinion gears incorporated in the new MASTER-DIAL. They are cut with utmost precision. They mesh smoothly throughout years of constant use.



CONSTANT-BALANCE Governor

Rotation of the governor wings is always smooth and even. Smooth operation of the governor is further assured by precision construction of the drum and uniform flexing of the wings to eliminate eccentric vibration.

"Watch-Maker" Accuracy



As with a fine watch or precision instrument, extreme accuracy governs every detail of construction of the new MASTER-DIAL. Each dial is the product of skilled workmen, using the most modern, specially developed equipment. Every dial is carefully and thoroughly tested to insure that it meets Kellogg's high standard. It is a dial that is made right in every way.

Wide Range of Adaptability

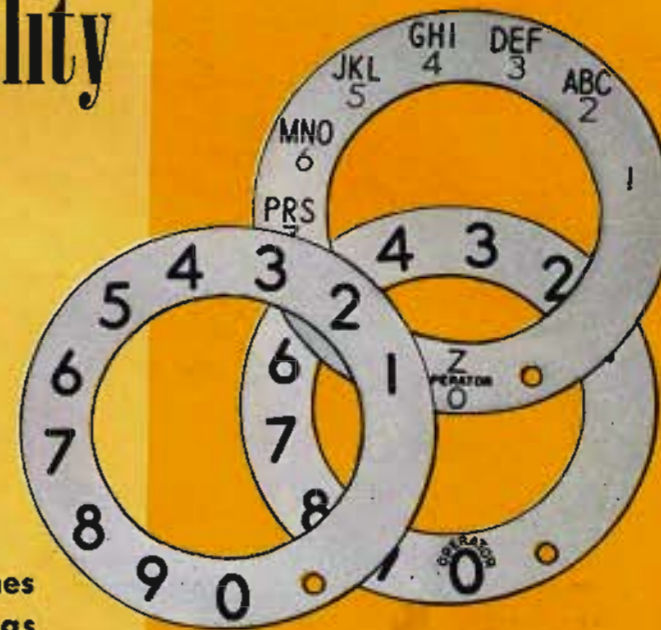
DIALS for All Telephone Services

METROPOLITAN NUMERAL RING

STRAIGHT NUMERAL RING

STRAIGHT NUMERAL RING with word "operator"

You have a choice of three types of numeral rings with the new MASTER-DIAL. One carries black numerals only on its snowy white surface. Another carries black numerals with the word "operator" around the zero. Another, for use in multiple office areas has both black numbers and bright red letters on the same white face. Replacing the straight numeral ring with the metropolitan type or vice-versa is simple and easy.



DIRECTLY INTERCHANGEABLE On Some Telephones

... Easily Adapted to Others with Adapter Rings

While the new MASTER-DIAL was specially designed for use with the new Kellogg Masterphones, it can be used on other makes of telephones also. For some telephones, special adapter rings are available that permit replacement with the new MASTER-DIAL. (When ordering, specify make and model number of telephone for which the dial is desired.)



KELLOGG WRENCH FOR REMOVING NUMBER CARD RING

For your convenience, Kellogg offers a handy, specially designed wrench. It's a durable, easy-to-use little tool that permits fast and easy removal of the retaining ring that holds the number card and protector in place.



Operating Dependability

SIMPLICITY of Design



MILLIONS of IMPULSES and still going strong!



New MASTER-DIALS placed on test have recorded millions of impulses—and are still operating with their first-run smoothness and quietness. This is dramatic evidence of what these dials offer you—performance far beyond your normal requirements.

MAINTAINS DEPENDABLE MAKE-BREAK RATIOS



Oscillograph Tests Prove that the new MASTER-DIAL is a supremely dependable mechanism. These tests show that after operating for millions of impulses without adjustment there is practically no change in make-break ratio.

Beauty OF DESIGN AND MATERIALS

No less impressive than the new MASTER-DIAL'S exceptional performance is its attractive streamlined exterior. The trim number identification card under its gleaming transparent cover... the black finger plate... the sparkling white numeral ring with its neatly inscribed characters... all these combine to make the new MASTER-DIAL an instrument of outstanding appearance. Both you and your subscribers will appreciate the beauty of



the new **KELLOGG** Master-Dial

Fewer parts, with no sacrifice of precision efficiency, makes the new MASTER-DIAL ideal from every standpoint. Easier to install and maintain, its high-quality, highly accurate parts retain perfect adjustment longer. This assures lower operating costs for you—greater satisfaction for your subscribers.

You can get the

Master-Dial NOW

on the new **KELLOGG MASTERPHONES**



D-1000 TYPE

In less than one short year, the Kellogg 1000 Series Masterphones have become the talk of the telephone world. These amazing new telephones, featuring years-ahead simplicity of design, interchangeability of universal parts and new accessibility, have been delivered to telephone companies everywhere.

Now, with the new Kellogg MASTER-DIAL as standard equipment, they are an even better buy. Now the new Masterphones are clearly superior in every respect.

The new MASTER-DIAL can be furnished with



D-1100 TYPE

either metropolitan or straight numeral rings. The dial itself is mounted on the housing with easily accessible mounting screws.

If you haven't as yet gone over the Masterphone story with your Kellogg Representative, by all means do so now. Interesting as the story was before, it will be even more interesting now that Masterphones are teamed up with MASTER-DIALS to give you the finest combination in telephone history. Phone or write us today to arrange a get-together at the earliest possible date.

Form 820

Printed in U.S.A.



KELLOGG SWITCHBOARD AND SUPPLY COMPANY

6650 South Cicero Avenue, Chicago 38, Illinois

WHERE ENGINEERING AND RESEARCH BUILD FINER COMMUNICATION EQUIPMENT



KELLOGG SWITCHBOARD & SUPPLY COMPANY

6650 SOUTH CICERO AVE.
CHICAGO 38, ILLINOIS



January 6, 1948

Gentlemen:

Standardize with Kellogg Masterphones.

Many telephone companies are now doing this. During 1947 numerous companies switched from "other telephones" to Kellogg Masterphones.

The 1000 series is recognized as the accepted standard for all subscribers services. This telephone, with simple modifications, can be used with any Manufacturers' type of Dial, Manual, or Magneto Central Office Equipment.

Compare the features of Kellogg Masterphones with "other telephones" offered you. Kellogg has set the standard. We expect others will follow.

Enclosed "Compare The Masterphone" bulletin reviews reasons why so many telephone companies have adopted Kellogg Masterphones as standard equipment.

If you are not already installing Kellogg 1000 series Masterphones, may I suggest you investigate at once.

You will be especially pleased with the excellent quality of transmission, reception and ringing offered.

On behalf of the Kellogg Company and myself I wish you a Happy and Prosperous 1948.

Yours very truly,

E. W. Miller, Manager
Apparatus Sales Department

jds

Who's who..?

IN YOUR TELEPHONE COMPANY

For several years we have been trying to bring our mailing names up to date. Without your help it is a very hard job, as we have found out. Won't you therefore aid us by filling in the lines below? Also check or "X" in the applicable boxes those persons who should receive bulletins and other telephone information periodically. Your help is sincerely appreciated. Please use the enclosed business reply envelope. No postage is required.

NAME	TITLE	Check or "X" in Box Below those who should receive regular literature
.....	PRESIDENT	<input type="checkbox"/>
.....		<input type="checkbox"/>
.....	GENERAL MANAGER	<input type="checkbox"/>
.....	CHIEF ENGINEER	<input type="checkbox"/>
.....	OUTSIDE PLANT ENGINEER	<input type="checkbox"/>
.....		<input type="checkbox"/>
.....	EQUIPMENT ENGINEER	<input type="checkbox"/>
.....		<input type="checkbox"/>

Postage
Will Be Paid
by
Addressee

No
Postage Stamp
Necessary
If Mailed in the
United States

BUSINESS REPLY ENVELOPE

FIRST CLASS PERMIT NO. 3677, SEC. 510, P. L. & R., CHICAGO, ILL.

KELLOGG.

6650 South Cicero Ave.

Chicago 38, Ill.

